



HHS emPOWER Program JOB AID | WEB-BASED TRAINING



The **HHS emPOWER Program Web-Based Training (#1083714)** is a free, publicly accessible course designed to help partners better understand the HHS emPOWER Program* and integrate its tools into their emergency preparedness, response, recovery, and mitigation activities.

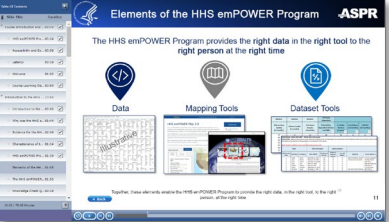
*The **HHS emPOWER Program**, a partnership between ASPR and the Centers for Medicare and Medicaid Services (CMS), provides dynamic data and mapping tools to help communities protect the health of more than 4.2 million Medicare beneficiaries who live independently and rely on electricity-dependent durable medical and assistive equipment and devices, and essential health care services.

Go to <https://www.train.org/main/course/1083714> to take the course today!

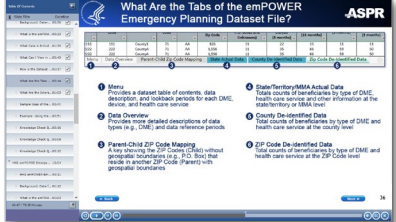
Course Features:

The course is divided into five modules, which provide an introduction to the HHS emPOWER Program, a detailed overview of each of the mapping and dataset tools, and examples of how public health authorities and their partners can use the program tools across the emergency management cycle.

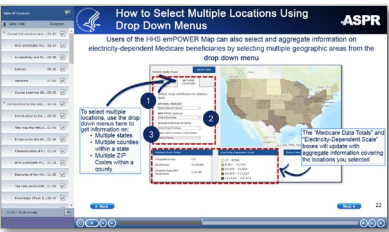
Program Information



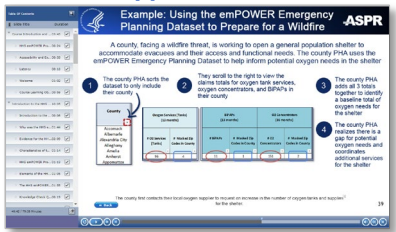
Program Tool Details



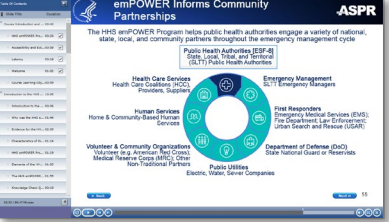
Step-by-Step Instructions



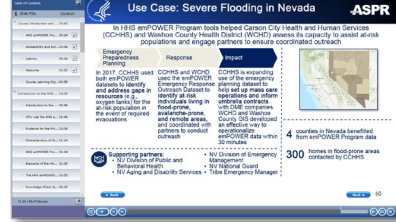
Practical Applications



Partner Information

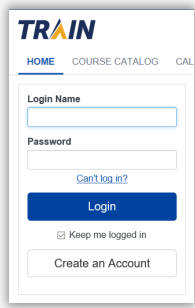


Real-World Case Studies



How to Launch the Course:

- 1 Create an account on [TRAIN.org](https://www.train.org), a national learning network, powered by the [Public Health Foundation](#).
For assistance, view the [video tutorials](#) or the ["Setting Up Your TRAIN Account" guide](#).



- 2 Search for course ID #1083714 in the TRAIN search bar, or [select this link](#) to go directly to the course.



- 3 Launch the course and review all screens (with audio and/or closed captioning). The course will take 1.5 hours, and can be paused and resumed at any time.

- 4 To earn CEUs**, you must achieve a score of at least 80% on the 10-question final exam, and you will have three attempts to do so. When you finish, close out of the course and select the button on the course landing page that says "certificate."



****Note:** We are in the process of certifying this course. We will provide an update on the status of CEUs in the course description section on TRAIN.

Updated: 3/30/2020

Contact empower@hhs.gov for more information

